



JOHN WAYNE AIRPORT (SNA) PILOT INFORMATION GUIDE

(also available at: www.ocair.com)



LOCATION:

4 nm S of the City of Santa Ana
 N33° 40.54' W117° 52.09'
 On Los Angeles Sectional, L3-L4 and Terminal Area Charts

Distances from other airports:

7 nm WSW of **MCAS El Toro - CLOSED**
 16 nm ESE of Long Beach
 12 nm SE of Fullerton

Distances from NAVAIDS: (• = DME)

ELB	117.2	255°	7 nm	VOR only
SLI	115.7	110°	11 nm	VORTAC
PDZ	112.2	215°	22 nm	VORTAC
OCN	115.3	303°	34 nm	VORTAC

COMMUNICATIONS FREQUENCIES

Field Elevation: 54 feet MSL

ATIS	(714) 546-2279	126.00
ASOS	(714) 424-0590	
Clearance Delivery		
VFR		121.85
IFR		118.00
John Wayne Ground*		
EAST		120.80
WEST		132.25
John Wayne Tower* [Operates; 0615 - 2300 LCL]		
RWYs 19R/01L		126.80
RWYs 19L/01R [RWY 19L/01R CLSD when Tower CLSD]		119.90
Common Traffic Advisory Frequency (CTAF)		126.80
SOCAL Approach Frequencies*		
SW-NW	124.65	
NW-NE	121.30	
NE-SE	124.10	

*[NOTE: Monitor ATIS prior to contacting Clearance Delivery, Ground, Tower, or Approach Control for frequencies in use.]



NORMAL VFR ARRIVAL ROUTES:

Expected Arrival Clearances:

Arriving: **(East)** From El Toro proceed to Signal Peak
 Expect: Enter LEFT Traffic, RWY 19L; report UCI.
 Arriving: **(SE)** Dana Point and Laguna Beach
 Expect: Proceed to Signal Peak for LEFT Traffic, RWY 19L; report UCI.
 Arriving: **(SW)** Huntington Pier
 Expect: Enter RIGHT Traffic, RWY 19R; report downwind.
 Arriving: **(WEST)** Clockwise to Chino Hills
 Expect: Proceed to Mile Square Park for RIGHT Traffic, RWY 19R.

ILS Localizer/DME:	I-SNA	111.75
LDA Localizer/DME:	I-OJW	108.30
AFSS:	RAL	122.45
VOT:		110.00

TRAFFIC PATTERN ALTITUDES:

Rwy 01L-19R TPA:

1056 (1000) small aircraft, 1556 (1500) turbine aircraft over 12500 lbs.

Rwy 01R-19L TPA:

856 (800) small single engine aircraft, 1056 (1500) twin engine aircraft.

NORMAL VFR DEPARTURE ROUTES:

Departing SE: El Toro Departure – “ Fly heading 080° ”
Departing S: Newport Departure – “ Fly heading 150° ”
Departing SW: Mesa Departure – “ Fly heading 220° ”
Departing NW: Orange Departure – “ Fly heading 330° ”

Squawk Code, Advisory Frequency, and Altitude as assigned.

Pilots not requesting radar service beyond the surface area of the Class C airspace may state “local” when requesting their departure route. (Example: “John Wayne Clearance, Cessna N739MB, west-side parking, Mesa Local Departure.”) Local radar service will be terminated upon exiting the 5 nm surface area of the Class C airspace. Pilots must then remain clear of all other regulated airspace, including the upper tier of the Class C airspace.

AVOID OVERFLIGHT OF 19R/01L:

VFR aircraft: To avoid overflight of Rwy 19R/01L:

Rwy 19L arrival fly final at 15° angle to Fwy,
 Rwy 19L departures turn LEFT 15° at departure end of runway.
 To avoid overflights of Rwy 01L, Rwy 01R departures turn RIGHT 15° at freeway.



LOCATED AT ALL RUNWAY HOLD POSITIONS
 -Surface Painted Hold Position Markings
 -Enhanced Centerline Markings

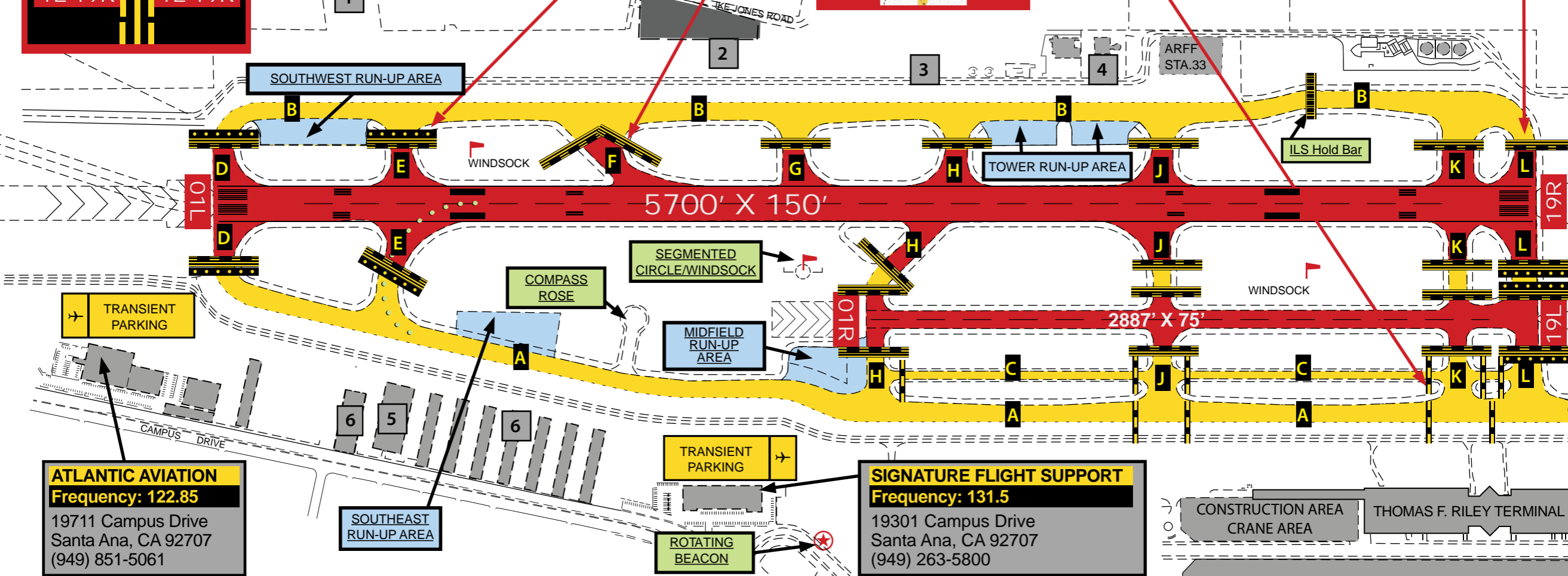
IN-PAVEMENT RWY GUARD LIGHTS:
 Located at TWYs D, E, L

RWY HOLD POSITION SIGN:
 Hold short of RWY at TWY

ELEVATED RWY GUARD LIGHTS:
 Located at ALL TWY/RWY intersections

TWY/TWY HOLDING POSITION:
 HOLD HERE if instructed to do so by ATC

RWY HOLD BARS:
 Always stop at SOLID LINE
 DO NOT CROSS unless instructed to do so by ATC



ATLANTIC AVIATION
Frequency: 122.85
 19711 Campus Drive
 Santa Ana, CA 92707
 (949) 851-5061

SIGNATURE FLIGHT SUPPORT
Frequency: 131.5
 19301 Campus Drive
 Santa Ana, CA 92707
 (949) 263-5800



- SNA Tenants**
1. Jay's Aircraft Maintenance
 2. Martin Aviation/Lyon Air Museum
 3. Signature Flight Support Hangars
 4. FAA Control Tower
 5. South Coast Associates Hangars
 6. Executive Hangars

Legend

- Runway Environment
- Taxiway Environment
- Runway Hold Short Bars
- Run-up Areas
- In-Pavement Guard Lights
- Taxiway Lead-off Lights

Help Prevent Runway Incursions:

1. "READ BACK" ALL RUNWAY HOLD SHORT INSTRUCTIONS.
2. BE VIGILANT WHEN OPERATING IN VICINITY OF TWY H, TWY C, RWY19L INTERSECTION.
3. WHEN IN DOUBT TELL CONTROLLERS "UNFAMILIAR" AND REQUEST PROGRESSIVE TAXI INSTRUCTIONS.
4. BE FAMILIAR – KNOW LAYOUT, SIGNAGE AND MARKINGS.
5. YOUR ACTIONS CAN MAKE ALL THE DIFFERENCE!